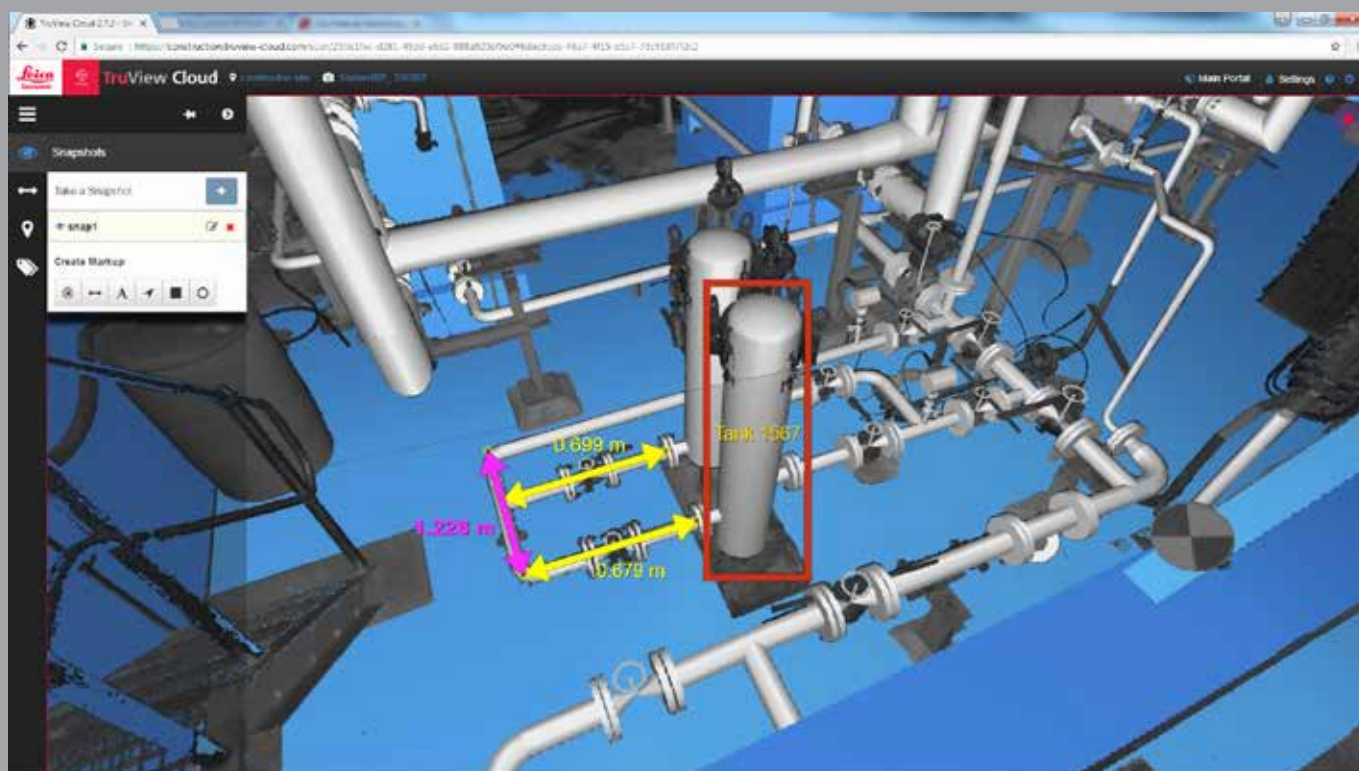


Leica TruView

Technical Specifications



Valid as of February 2021

leica-geosystems.com



- when it has to be **right**

Leica
Geosystems

PART OF
HEXAGON

Leica TruView Technical Specifications

Deployment	TruView Local	TruView Enterprise	TruView Cloud	TruView (formerly JetStream Viewer)
Accessed via web browser	♦	♦	♦	
Accessed via desktop				♦
Runs independent of a server	♦			♦
Deployed as a native Windows® application		♦		♦
Deployable on customer-owned cloud infrastructure**		♦		♦
Deployable behind firewall		♦		♦
Deployed by Leica Geosystems in Secure Cloud Environment			♦	
Supports "portable" deployment via thumb drive				♦

Browser and Operating System Compatibility	TruView Local	TruView Enterprise	TruView Cloud	TruView (formerly JetStream Viewer)
Compatible with Microsoft Internet Explorer	♦	♦	♦	
Compatible with Microsoft Edge		♦	♦	
Compatible with Firefox		♦	♦	
Compatible with Google Chrome		♦	♦	
Compatible with Safari		♦	♦	
Compatible with macOS		♦	♦	
Compatible with iOS		♦	♦	
Compatible with Android		♦	♦	
Compatible with Windows®	♦	♦	♦	♦

Data Import	TruView Local	TruView Enterprise	TruView Cloud	TruView (formerly JetStream Viewer)
Accepts TruView Local data sets published by Cyclone	♦			
Accepts TruView Local data sets published by Cyclone REGISTER 360	♦			
Accepts TVG data sets published by Cyclone*		♦	♦	
Accepts TVG data sets published by Cyclone REGISTER 360*		♦	♦	
Accepts LGS data sets published by Cyclone***		♦	♦	♦
Accepts LGS data sets published by Cyclone REGISTER 360***		♦	♦	♦
Accepts .jsv files published from Cyclone, Cyclone REGISTER 360 or JetStream Admin				♦
Accepts .ifc files				♦
Accepts .obj files				♦
Accepts .coe files				♦
Accepts direct publishing (no TVG or LGS file creation) from Cyclone (No PUBLISHER Licence required)			♦	
Accepts direct publishing (no TVG or LGS file creation) from Cyclone REGISTER 360 (No PUBLISHER Licence required)			♦	
Upload backups from TruView Enterprise or TruView Cloud		♦	♦	

Data Export/Backup	TruView Local	TruView Enterprise	TruView Cloud	TruView (formerly JetStream Viewer)
Create backups of full system (all portals) data				
Data only (scans and site)		♦	♦	
User info only		♦	♦	
Full backup (data and user info)		♦	♦	
Create backups of per-portal data				
Data only (scans and site)		♦	♦	
User info only		♦	♦	
Full backup (data and user info)		♦	♦	

Leica TruView Technical Specifications

User Permissions	TruView Local	TruView Enterprise	TruView Cloud	TruView (formerly JetStream Viewer)
Re-publish edited LGS files				♦
Unrestricted file usage	♦			♦
User access controlled by TruView Enterprise Admin interface		♦		
User access controlled by TruView Cloud admin interface			♦	
User access controlled on a per-portal basis		♦	♦	
Includes tiered user privileges (anonymous, user, power user, admin)		♦	♦	
Admin user privileges		♦	♦	
Create portals		♦	♦	
Create sites within portals		♦	♦	
Manage portals (portal policies, public access, upload access)		♦	♦	
Create users		♦	♦	
Assign user roles (admin, power user, user)		♦	♦	
Assign users to portals		♦	♦	
Manage users (change user info and reset passwords)		♦	♦	
Manage data assignment to portals		♦	♦	
Customise TruView portal (set custom URL, upload company logo, set public view of the site)		♦	♦	
Create backups (whole account or per portal, data only or with user information)		♦	♦	
View server logs		♦	♦	
Edit deliver of system and user notifications		♦	♦	
Upload data to all sites/portals		♦	♦	
Full access to all viewer features listed below		♦	♦	
Change default language of account (Chinese, English, French, German, Hungarian, Italian, Japanese, Norwegian, Polish, Russian)		♦	♦	
Power user privileges		♦	♦	
Upload data to assigned portal(s)		♦	♦	
Create sites within portals		♦	♦	
Manage data within assigned portals		♦	♦	
Change personal info		♦	♦	
Change personal password		♦	♦	
Change personal user language		♦	♦	
View any data on assigned portals uploaded by self or other users		♦	♦	
Full access to all viewer features listed below		♦	♦	
User privileges		♦	♦	
Change personal info		♦	♦	
Change personal password		♦	♦	
Change personal user language		♦	♦	
View data on assigned portal(s)		♦	♦	
Full access to all viewer features listed below		♦	♦	
Anonymous privileges	♦	♦	♦	
View data on public sites	♦	♦	♦	
Access to limited viewer features listed below	♦	♦	♦	

Viewer Features	TruView Local	TruView Enterprise	TruView Cloud	TruView (formerly JetStream Viewer)
Full 3D point cloud access				♦
Panoramic, depth-mapped images of digital reality data viewable from setup position	♦	♦	♦	♦
Automatic syncing of GeoTags, Snapshots and markups		♦	♦	♦
Save Snapshots and markups to xml file for distribution	♦			
Save GeoTags to xml file for distribution	♦	♦	♦	
View SiteMap(s) per project		♦	♦	♦
Directional miniature SiteMap for navigation		♦	♦	♦
View list of Scans per project		♦	♦	

Leica TruView Technical Specifications

Viewer Features	TruView Local	TruView Enterprise	TruView Cloud	TruView (formerly JetStream Viewer)
View list of GeoTags per project		♦	♦	♦
View list of Snapshots per project		♦	♦	♦
View list of files per project		♦	♦	♦
View per project metadata		♦	♦	♦
Create Snapshot	♦	♦	♦	♦
Delete Snapshot	♦	♦	♦	♦
Name Snapshot	♦	♦	♦	♦
Create markup (in Snapshot)	♦	♦	♦	♦
Add point coordinates (change pen colour and thickness, opacity, font, font size, marker text, units of measure, temperature measurement when available)	♦	♦	♦	♦
Add point-to-point measurement (change opacity, pen colour and thickness, font, font size, units of measure, temperature measurement when available)	♦	♦	♦	♦
Add text (change pen colour, opacity, font, font size, text contents)	♦	♦	♦	♦
Add leader arrow (change pen colour, thickness, opacity, select single or double arrow)	♦	♦	♦	♦
Add region markups (ellipse or rectangle, change pen colour, thickness, opacity, select fill colour and opacity)	♦	♦	♦	♦
Delete individual markups	♦	♦	♦	♦
Take temporary measurement: point-to-point, angle, temperature (Celsius, Fahrenheit or Kelvin, when IR layer is present in LGS file)	♦	♦	♦	♦
Take temporary measurement: area				♦
Adjust neighbouring setup markers (visibility of data based on distance, elevation of markers, colour, size, units of measure, view position marker, view position label)		♦	♦	♦
Add GeoTags (tag ID, category, table, link. Link options include URL, File, Snapshot or other GeoTag)	♦	♦	♦	
Edit GeoTags (tag ID, category, table, link. Link options include URL, File, Snapshot or other GeoTag)				♦
Delete GeoTags	♦	♦	♦	
Layer management: View layers when present in LGS file				♦
RGB		♦	♦	♦
Infrared (IR)		♦	♦	♦
High Dynamic Range (HDR)		♦	♦	♦
Intensity Greyscale		♦	♦	♦
Intensity Hue		♦	♦	♦
Models				♦
SiteMap				♦
Setups				♦
GeoTags				♦
Measurements (temporary)				♦

Licensing	TruView Local	TruView Enterprise	TruView Cloud	TruView (formerly JetStream Viewer)
Free end-user viewer*	♦	♦	♦	♦
Customer purchases Application		♦		
Customer purchases SaaS subscription and storage			♦	
Unlimited users	via file sharing	♦	♦	via file sharing
Limited to 10 portals****		♦		
Unlimited portals			♦	

* Publishing TVG from Cyclone or Cyclone REGISTER 360 requires Cyclone TruView PUBLISHER or Cyclone PUBLISHER Pro.

** All cloud deployment on customer owned infrastructure will be guided by customer. Customers seeking Cloud deployment of TruView without expertise in this domain should purchase TruView Cloud rather than TruView Enterprise.

*** Publishing LGS from Cyclone or Cyclone REGISTER 360 requires Cyclone PUBLISHER Pro licence.

**** Portals within a single VM can be upgraded to 25 with additional purchase.

Hardware and System Requirements for TruView Enterprise/Cloud browser access:

Supported viewing devices	All modern desktops, laptops, tablets and smartphones.
Supported viewing browsers	Chrome 44, Firefox 39, IE 11, Safari 8, IOS Safari 8.3, Android Browser 40, and Chrome for Android 42, or newer. Browsers must be a version sufficient to support WebGL and HTML5.

Recommended Computer Specifications to deploy TruView Enterprise for Windows:

Processor	2 GHz Quad Core processor or better
RAM	Minimum 8 GB or more for 64-bit OS
Operating System	Microsoft, Windows® 7-8-10 (64 bit supported)
Windows® Server (optional)	Windows Server 2012 or later
Hard Disk	40 GB with 1 GB, or more, free disk space; 10 GB for TruView Enterprise application and database. Additional space required to store TruView data.
Network	100 Mbit/s or better

Recommended Computer Specifications to deploy TruView (formerly JetStream Viewer)

Processor	Latest i7 quad core or equivalent running at 3.5GHz
RAM	64GB
Operating System	Windows 10 (64 bit)
Graphics	NVIDIA GTX 900 or 1000 series with 8GB of video memory or NVIDIA Quadro P5500 or equivalent
Hard Disk	Space: 2G Internal SSD

Customer Care Packages (CCP) Information

TruView Enterprise 2021	January 25, 2020
-------------------------	------------------

Revolutionising the world of measurement and survey for nearly 200 years, Leica Geosystems, part of Hexagon, creates complete solutions for professionals across the planet. Known for premium products and innovative solution development, professionals in a diverse mix of industries, such as aerospace and defence, safety and security, construction, and manufacturing, trust Leica Geosystems for all their geospatial needs. With precise and accurate instruments, sophisticated software, and trusted services, Leica Geosystems delivers value every day to those shaping the future of our world.

Hexagon is a global leader in sensor, software and autonomous solutions. We are putting data to work to boost efficiency, productivity, and quality across industrial, manufacturing, infrastructure, safety, and mobility applications. Our technologies are shaping urban and production ecosystems to become increasingly connected and autonomous – ensuring a scalable, sustainable future.

Hexagon (Nasdaq Stockholm: HEXA B) has approximately 21,000 employees in 50 countries and net sales of approximately 3.8bn EUR. Learn more at hexagon.com and follow us [@HexagonAB](https://twitter.com/HexagonAB).

Microsoft, Windows® and the Windows logo are either registered trademarks or trademarks of Microsoft Corporation in the United States and / or other countries.

Copyright Leica Geosystems AG, 9435 Heerbrugg, Switzerland. All rights reserved.
Printed in Switzerland – 2017. Leica Geosystems AG is part of Hexagon AB. 873085en – 02.21

Product functionality is subject to change.